

[Westlake](#)

Temple Community Hospital Bites the Dust

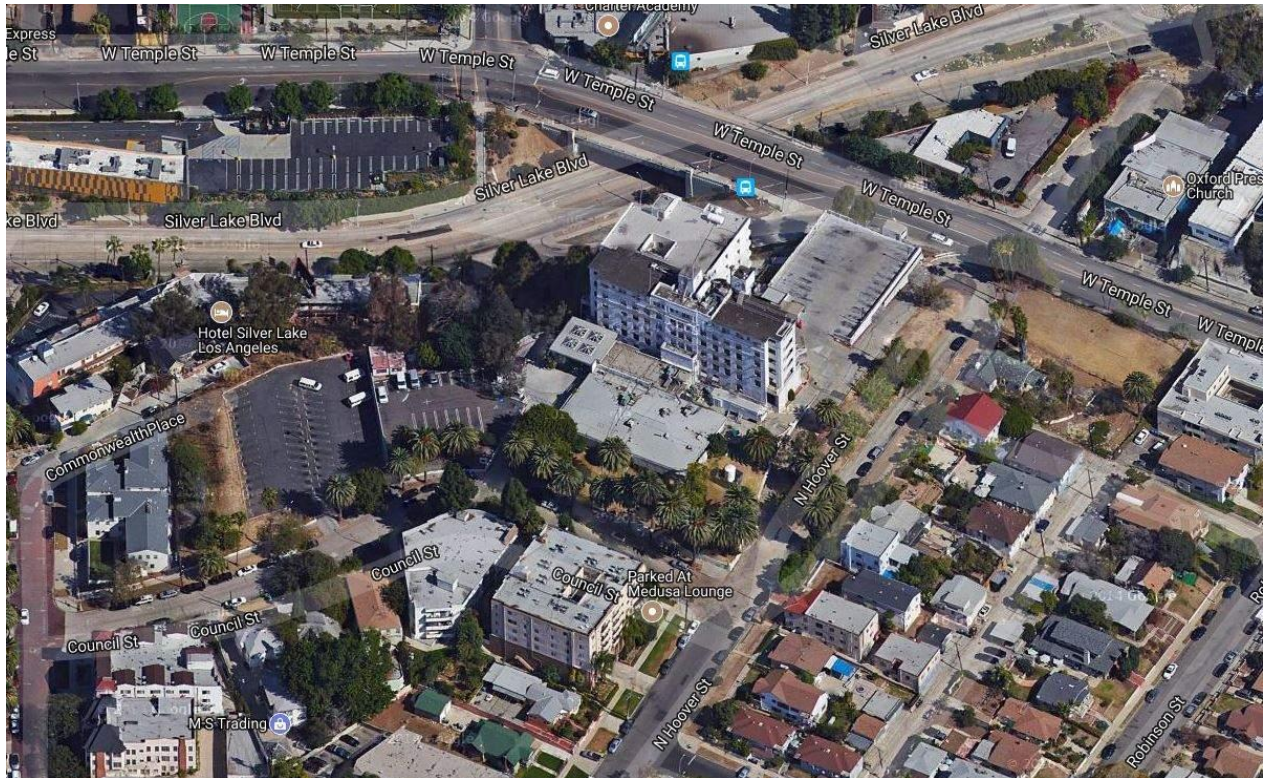
A 221-unit apartment complex is set to rise in its place.

November 27, 2018, 9:00AM Steven Sharp [4 Comments](#)









Four years after it last served patients, Temple Community Hospital has been razed to make way for a multifamily residential development.

Located at 235 N. Hoover Avenue, the six-story hospital was a prominent landmark in the Rampart Village neighborhood due to its hilltop location overlooking both Temple Street and the Hollywood Freeway. Faced with a looming \$50-million bill to retrofit the facility to meet modern earthquake safety standards, the facility was shuttered in 2014 and sold in 2016 to a joint venture between LaTerra Development and Gemdale Corp.

Earlier this year, the developers received approvals from the City of Los Angeles to redevelop the nearly three-acre campus with a five-story apartment complex called Pinnacle 360. The proposed development would offer 221 studio, one-, two-, and three-bedroom apartments - with 19 set aside for very-low-income households - atop 384 parking spaces.

Carrier Johnson + Culture is designing the low-rise structure, which will feature amenities such as a fitness center, swimming pool, and rooftop decks with view of the entire Los Angeles basin.

LaTerra and Gemdale are currently in the process of obtaining construction permits for the new development that will replace the hospital.

The two companies have partnered on several similar projects throughout Central Los Angeles, including a proposed development near the intersection of Sunset Boulevard and Western Avenue in Hollywood.