

# Mixed-use apartment buildings topped out at Broadway & Cloverfield

New housing from LaTerra Development shapes up in Santa Monica

September 27, 2021, 12:45PM Steven Sharp



View from Broadway and Cloverfield looking northwest

Urbanize LA

Seven months after we last checked in, framing is now complete for a pair of mixed-use apartment buildings from [LaTerra Development](#) in [Santa Monica](#).

Located at the northwest corner of Broadway and Cloverfield Avenue, the three-story buildings will contain a combined total of 49 studio, one-, two-, and three-bedroom apartments upon completion. Plans also call for 2,700 square feet of ground-floor commercial space and basement parking for 128 vehicles.

As a condition of approval, five of the apartments will be set aside as deed-restricted affordable housing.

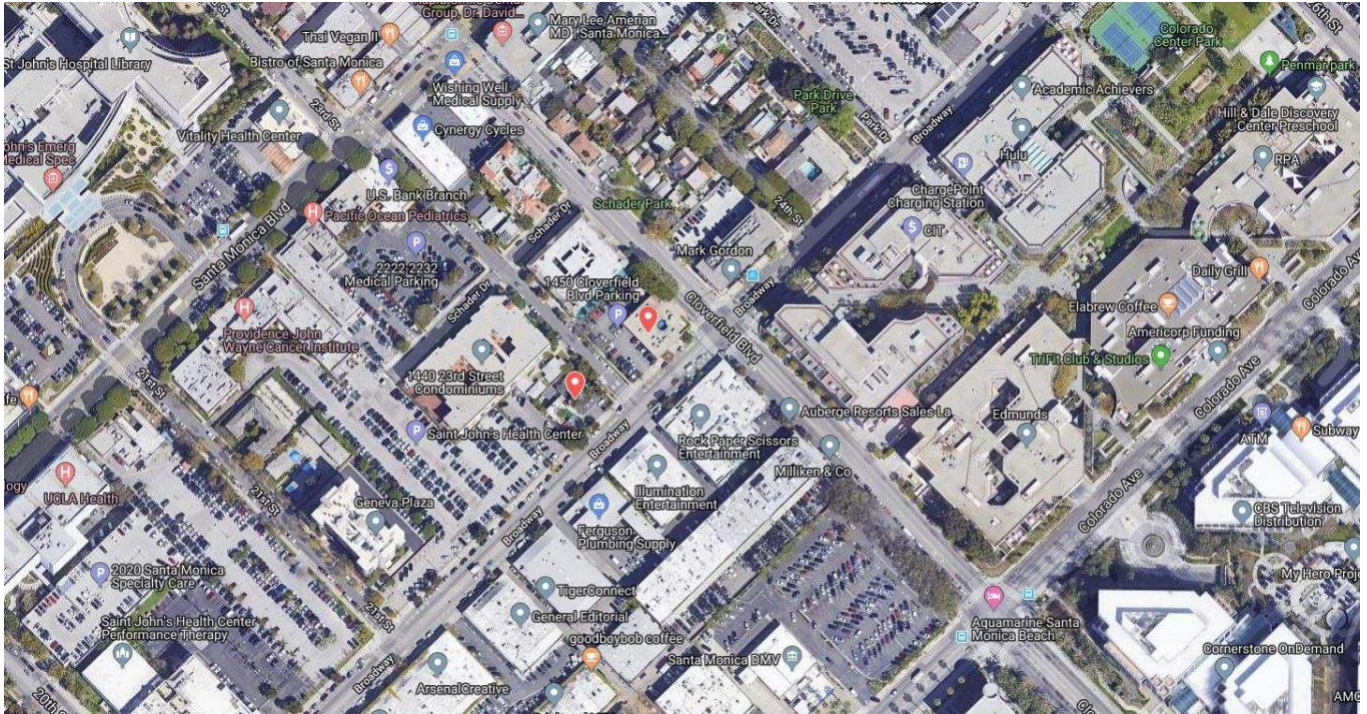
Designed by [Tighe Architecture](#), the apartments will be clad in perforated panels arranged into jagged forms. Plans call for rooftop amenity decks on both buildings.



Rendering of a rooftop amenity deck at Broadway & Cloverfield



View from Broadway and 23rd



1450 Cloverfield Avenue and 2225 Broadway

The project is one of more than a half-dozen of LaTerra's new housing developments in Los Angeles County, including a similar apartment complex now rising at the intersection of Santa Monica Boulevard and Yale Avenue. The company's other developments include proposed and under-construction buildings in Downtown, Burbank, West Hollywood, Mar Vista, and Los Feliz.